

Armidale 34

\$427,000

5 3 2

ELEVATE

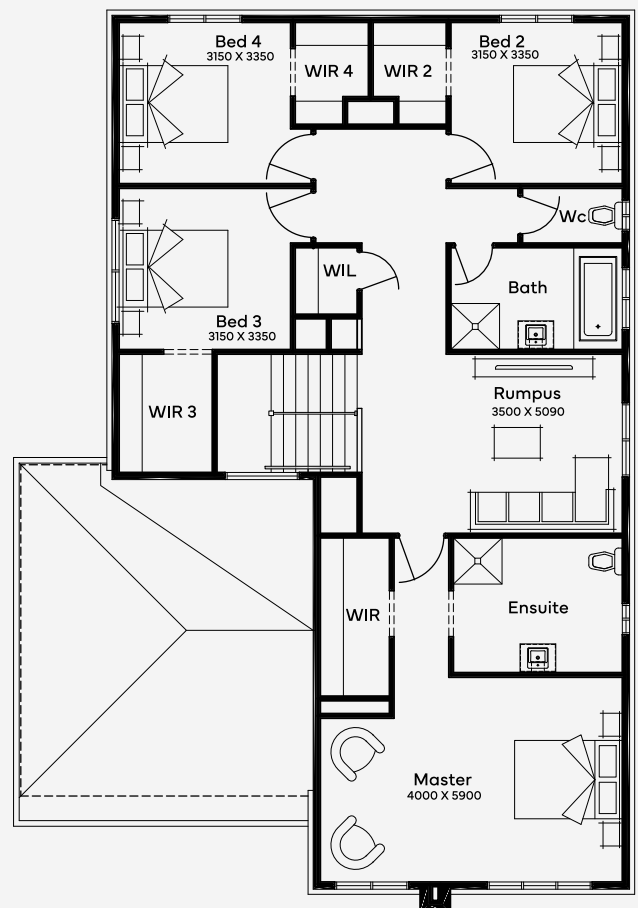
The Armidale 34, a double-storey home ideal for 14m+ blocks, features 5 bedrooms and 3 bathrooms with a 2-car garage. The ground floor boasts an open-plan living area with a large kitchen and walk-in pantry. A guest bedroom with a private ensuite and walk-in wardrobe, plus a spare lounge, provides impressive spaces for hosting. Upstairs, the floor plan includes three bedrooms with walk-in closets, a rumpus room, and a resort-style master suite to ensure relaxation and enjoyment for the entire family.

House Area

320.3 m²

Min Lot Size (WxL)

14m x 25m



Please note: Some floorplan option combinations may not be possible together - please speak to a New Home Specialist.

Base price shown as of 20 May 2024 and is subject to change.

SIMONDS
How Australia Homes

14M+ LOT WIDTH

DOUBLE STOREY